

Word of the Week

{ **Spring Term Quiz** }

Word of the Week

Each question in this quiz relates to one of the words of the week from this term.

Word of the Week

You can work in pairs or small teams.

You can't look back at your planners.

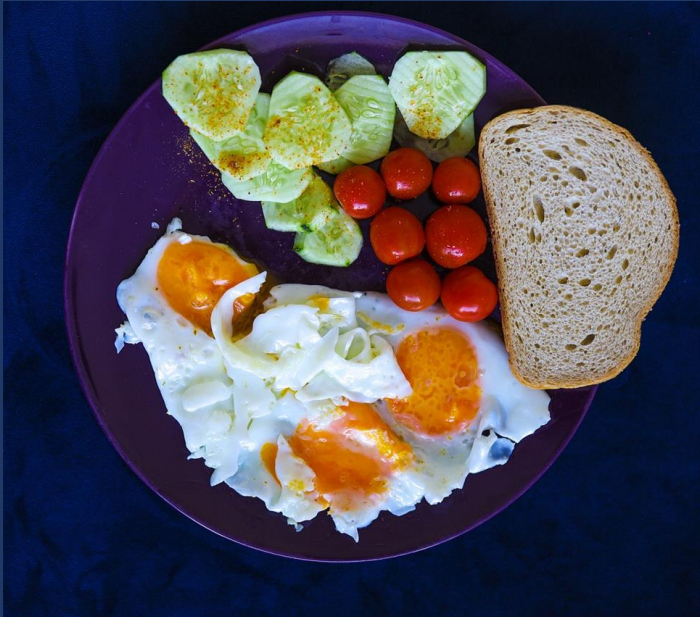
Write your answers on your mini
whiteboards.

We will mark them all at the end.

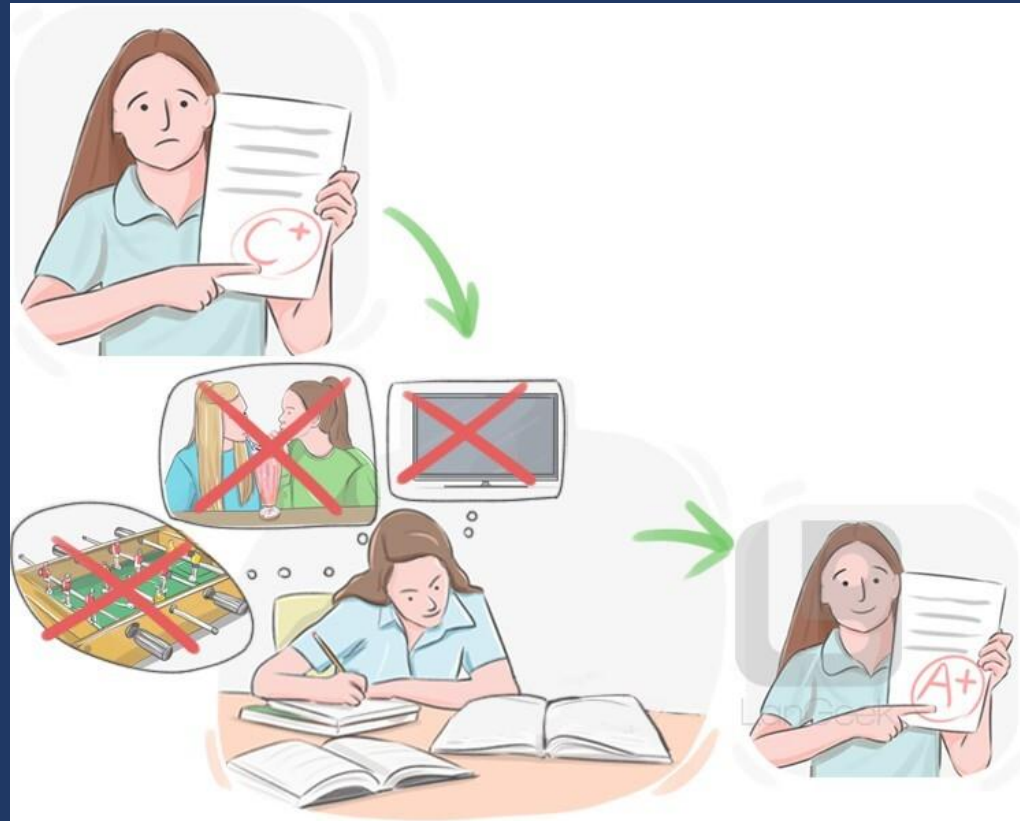
Which WOW is this a definition of?

A material which provides the surface on which something is deposited or inscribed.

Which WOW do these images illustrate?



Which WOW could this image represent?



Word of the Week

{ Q4 }

Which WOW did this phrase relate to?

Gung Hay Fat Choy

Which WOW do these images represent?



Which WOW completes this example?

_____ spurs us to stand side by side with our sisters and brothers,
especially those living in poverty.

Which WOW has these synonyms?

Summarise

Condense

Abbreviate

Capture

Word of the Week

Q8

Which WOW did we have in Neurodiversity Celebration Week?



**Neurodiversity
Celebration
Week**

Which WOW has the following definition?

Friendly and welcoming to visitors or guests.

Word of the Week

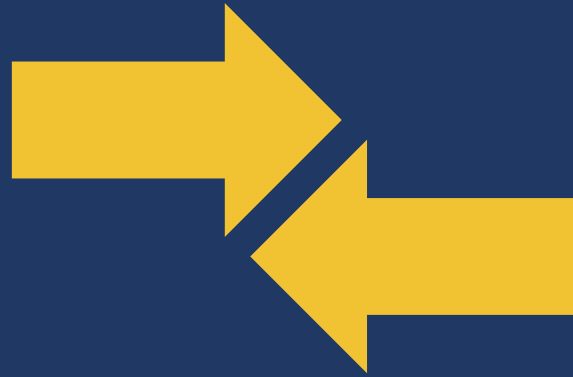
{Q10}

Which WOW is a property of metals?



Word of the Week

Swap your answers



Which WOW is this a definition of?

A material which provides the surface on which something is deposited or inscribed.

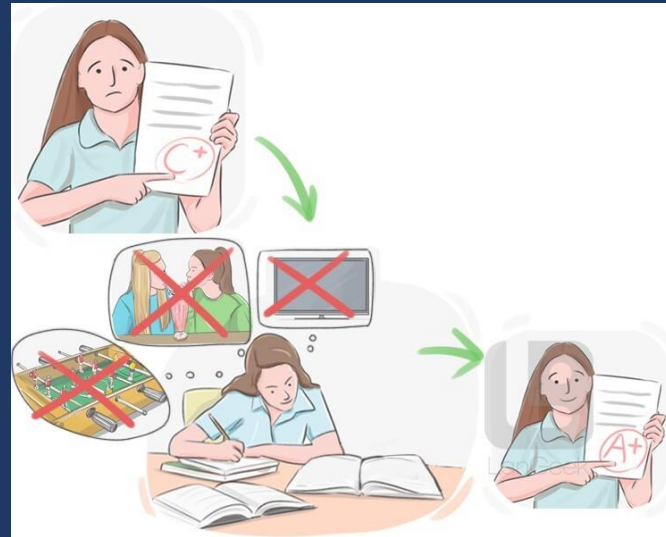
Substrate

Which WOW do these images illustrate?



Portmanteau

Which WOW could this image represent?



Ameliorate

Word of the Week

{ Q4 }

Which WOW did this phrase relate to?

Gung Hay Fat Choy

Prosperity

Which WOW do these images represent?



Reverence

Which WOW completes this example?

_____ spurs us to stand side by side with our sisters and brothers,
especially those living in poverty.

Solidarity

Which WOW has these synonyms?

Summarise

Condense

Abbreviate

Capture

Encapsulate

Word of the Week

Q8

Which WOW did we have in Neurodiversity Celebration Week?



**Neurodiversity
Celebration
Week**

Inclusion

Which WOW has the following definition?

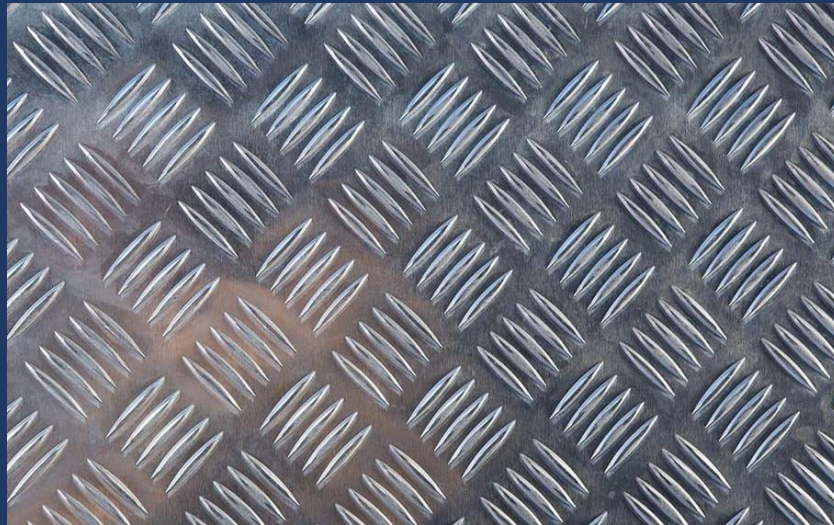
Friendly and welcoming to visitors or guests.

Hospitable

Word of the Week

{Q10}

Which WOW is a property of metals?



Malleable

Word of the Week

Spring Term Quiz